

hello, I'm

Alfred™

Programming Instructions

Please read me carefully before using.




DB2



DB2 Series

Programming Instructions

Alfred INC. reserves all rights for the final interpretation to this instruction.

 All design and specifications are subject to change without notice

Warnings

Failure to follow these instructions could result in damage to the product and void the factory warranty.

The accuracy of the door preparation is critical for the proper functioning and security of this product. Misalignment can cause performance degradation and lessening of security.

Finish Care: This lockset is designed to provide the highest standard of product quality and performance. Care should be taken to ensure a long-lasting finish. When cleaning is required use a soft, damp cloth. Using lacquer thinner, caustic soaps, abrasive cleaners or polishes could damage the coating and result in tarnishing.

⚠ CAUTION

IMPORTANT: Do not install batteries until the lock is completely installed on door.

1. Master PIN Code(4~10 digit): Default master PIN code is "12345678", please modify it after installation.
2. User PIN Code Number: User PIN codes can be set up with PIN code numbers (00~19).
3. User PIN Code(4~10 digit): User PIN codes can be set up only through Master PIN code or Alfred APP. Each User PIN code has only one PIN Code Number.

Introduction

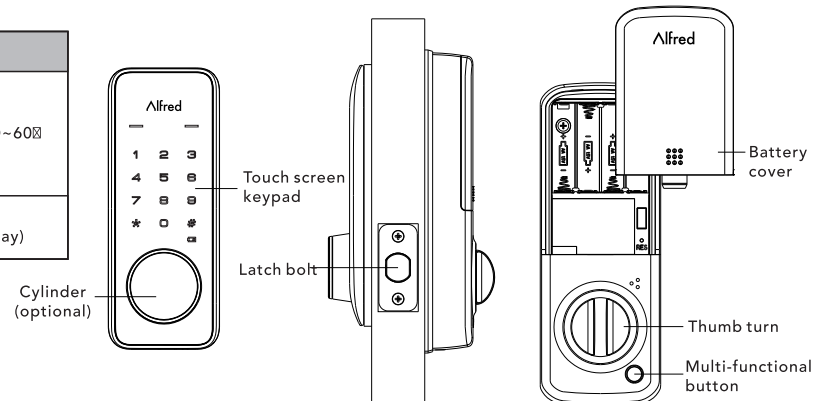
The Alfred DB2 combines a robust lockset with a contemporary electronic aesthetic.

Users benefit from an interactive touch screen that makes day-to-day access effortless, as well as offering voice-guided programming for simple updates to user information in the event of staffing changes or security breaches. Alfred DB2 is engineered for quick and easy installation and fits in place of a standard deadbolt lock door prep.

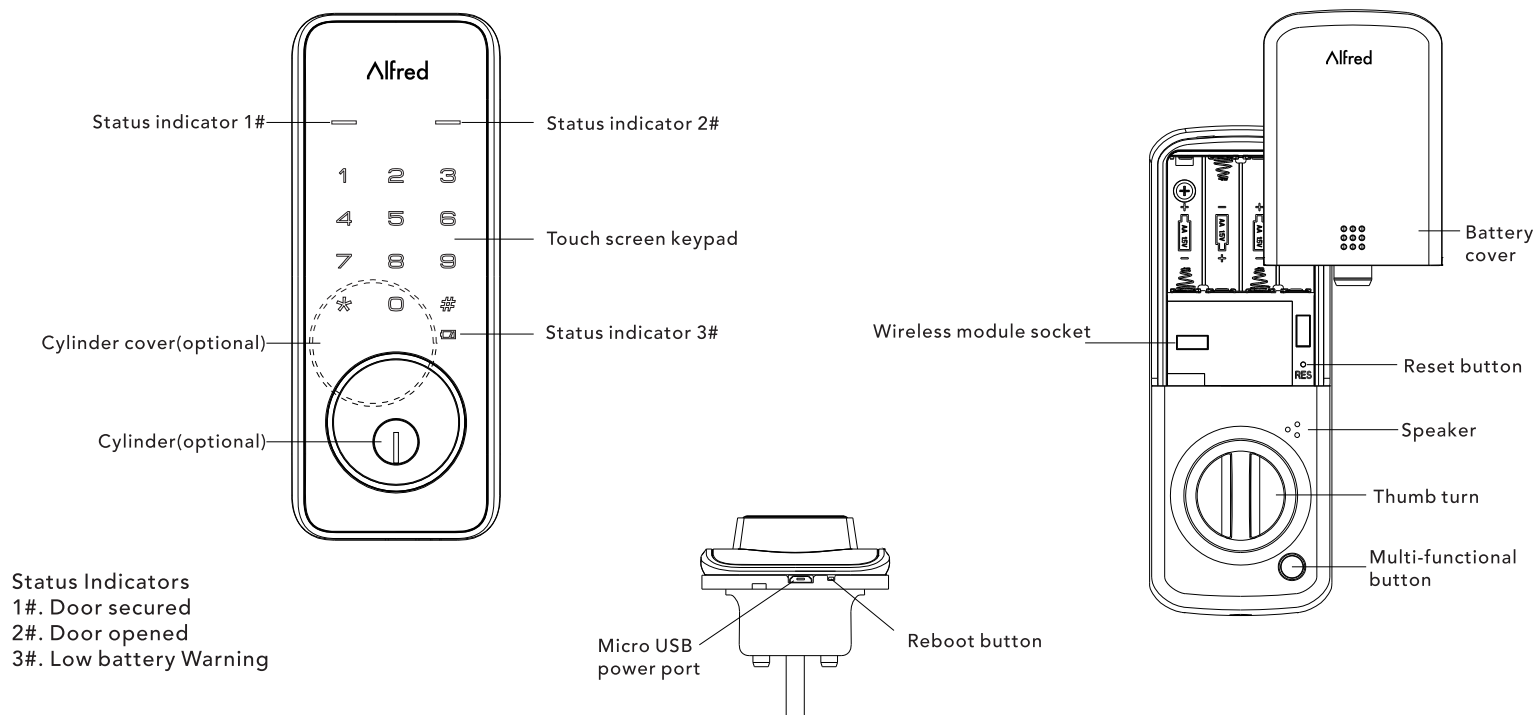
If this is an Wireless-enabled lock, it needs to be located within 50-100 feet of another network controller(Gateway). That distance is influenced by objects between the lock and the controller and may be expended depending on proximity to other network devices. Also, if the lock is connected to a network controller, it is recommended that it is programmed through the centralized user interface(PC or hand-held device) to ensure communication between the lock and the controller unit.

Parts Illustrations

Item	Specifications	Remarks
Outside escutcheon	DB2: 162mm(L) x 68mm(W) x 14.5mm(H) DB2-B: 172mm(L) x 68mm(W) x 14.5mm(H)	Operation temperature: -30~60℃
Inside escutcheon	200mm(L) x 77mm(W) x 46mm(H)	
Battery	AA alkaline battery x4 (Operating voltage: 3.8~6.0V)	Last up to one year (10 times open/close per day)



Programming



⚠ CAUTION

1. You can operate following the voice guide.
2. Master and User PIN code have 4-10 digits, the default Master PIN code is [12345678]. Please change it prior to programming of the lock.

Definitions

Master Mode:

The Master Mode could be entered by entering “**+Master PIN Code+#” to programming the lock.

Master PIN code:

The Master PIN Code is used for programming and for feature settings.



The default Master PIN Code must be changed after installing. The Master PIN Code can unlock the device anytime.(including Away Mode and Privacy Mode)

Auto Re-lock:

After successful PIN Code entry or APP access and the unit unlocks, it will automatically re-lock after 30 seconds. This feature is disabled in default setting. Could be set up in Master Mode or through Alfred APP.

Manual Mode:

Auto Re-lock function could be adjusted to Manual Mode. In Manual Mode the lock could be locked only by pressing any key for 2 seconds from outside or using thumb turn or Multi-functional button from inside.

One Touch Re-lock:

When the bolt is retracted, activating the keypad and press any key for 2 seconds will extend the bolt(during Auto Re-Lock duration or when Manual Mode is enabled)

Shutdown Time:

The lock will shutdown for a default of 5 mins and not allow operation after the wrong code entry limit(10 times) has been met. When the unit is in Shutdown, the screen will flash when you are trying to use keypad.

Away Mode:

This feature is enabled by the Master PIN Code in Master Mode or Alfred APP, it restricts all user PIN code access, except Master PIN code and APP access. This feature will disabled automatically after entering Master PIN Code from outside or using APP. If someone unlock the unit by using thumb turn or Key override, the lock will alarm for 1 min and send a message to user's hand-held device for warning(requires wireless module).

Silent Mode:

Enabling Silent Mode shuts off the code confirmation tone playback for use in quiet areas. Silent mode is selected in the Voice setting of Master Mode or Alfred APP.

Status LED:

Located on outside escutcheon.

User PIN code:

The User PIN code operates the lock. Maximum number of user PIN codes is 20.

Definitions

Wrong Code Entry Limit:

After a specified number of unsuccessful attempts at entering a valid PIN code the lock will shut down and not allow operation. Wrong code entry limit is 10 times.

Reboot button:

When the system crash down, the lock could be restart by pressing Reboot button on outside escutcheon.

Reset button:

After reset operation, the lock will be restored to factory default settings, all user credentials will be deleted. Refer to reset guide.

Privacy mode:

After holding the multi-functional button for 3 seconds, the lock will be set to Privacy mode, it restricts all user PIN code access, except Master PIN code and APP. This feature will disabled automatically after entering Master PIN Code or using APP access from outside, or someone unlock the unit by using thumb turn or override key(optional).

Factory Default Settings

Settings	Factory Defaults
Master PIN Code	12345678
Auto Re-lock	Disabled
Speaker	Enabled
Wrong Code Entry Limit	10 times
Shutdown Time	5 mins
Voice guide language	English
Bluetooth	Disabled(Energy saving)

Lock Operation

-Change Master PIN code

1. Touch the screen with your hand to activate.
2. Enter "*" twice and the 4-10 digit Master PIN Code followed by "#". Lock Response: Voice guide
3. Enter "1" to change Master PIN code. Lock Response: Voice guide
4. Enter new 4-10 digit Master PIN Code followed by "#" twice(2). Lock Response: Voice guide



CAUTION

Before changing default Master PIN code, all other setting menu will be disabled.
You have to change Master PIN code first, then do other lock settings.

Lock Operation

-Add Up User PIN Codes

User PIN codes can be programmed through the Master PIN Code or APP.

1. Touch the screen with your hand to activate.
2. Enter "*" twice and the Master PIN Code followed by "#". Lock Response: Digit 1-8 on keypad light up.
3. Enter "2" Lock Response: All keys on keypad light up.
4. Enter The User Number to be registered(00-19) followed by "#"
5. Enter new User PIN code followed by "#"(twice)
6. To continue adding users, do previous steps 4-5 again.

CAUTION

When registering User PIN Codes, the code must be entered within 10 seconds or time expires. No matter setting succeed or failed, the process won't completed and stay at current stage, you can press "*" to return to previously menu.

-Delete User PIN Code

User PIN codes can be programmed through the Master PIN Code or APP.

1. Touch the screen with your hand to activate.
2. Enter "*" twice and the Master PIN Code followed by "#". Lock Response: Digit 1-8 on keypad light up.
3. Enter "3" Lock Response: All keys on keypad light up.
4. Enter The User Number(00-19) or User PIN code to be deleted followed by "#". Lock Response: Voice guide.
5. To continue deleting users, do previous steps from 1-4 again.

CAUTION

When deleting User PIN Codes, the User Number must be entered within 10 seconds or time expires.

No matter setting succeed or failed, the process won't completed and stay at current stage, you can press "*" to return to previously menu. Deleting all User PIN codes could be done only by reseting the lock to factory default settings.

-Auto Re-lock enable/disable

Auto Re-lock feature can be programmed through the Master PIN Code or Alfred APP.

1. Touch the screen with your hand to activate.
2. Enter "*" twice and the Master PIN Code followed by "#". Lock Response: Digit 1-8 on keypad light up.
3. Enter "4" Lock Response: Digits 1 and 2 on keypad light up.
4. Enter "1" to enable, enter "2" to disable. Lock Response: Voice guide

Lock Operation

-Silent Mode(Speaker enable/disable)

Silent Mode feature can only be programmed through the Master PIN Code or Alfred APP.

1. Touch the screen with your hand to activate.
2. Enter "*" twice and the Master PIN Code followed by "#". Lock Response: Digit 1-8 on keypad light up.
3. Enter "5" to set up languages. Lock Response: Digits 1-6 on keypad light up.
4. Enter "1 or 2 or 3 or 4 or 5" to select voice guide language(Silent Mode disabled), enter "6" to enable Silent Mode.

-Enable Away Mode

Away Mode feature can only be programmed through the Master PIN Code or Alfred APP.

1. Touch the screen with your hand to activate.
2. Enter "*" twice and the Master PIN Code followed by "#". Lock Response: Digit 1-8 on keypad light up.
3. Enter "6" to enable.

CAUTION

In Away Mode, all User PIN Code will be disabled temporary, device could be unlocked only by Master PIN code or APP. Away Mode will be disabled automatically after entering Master PIN Code or using APP access. If someone unlock the unit by using thumb turn or override key(optional), the speaker will give alarm.

-Bluetooth settings

Bluetooth feature can be programmed through the Master PIN Code or Alfred APP. Bluetooth is disabled in factory default setting.

1. Touch the screen with your hand to activate.
2. Enter "*" twice and the Master PIN Code followed by "#". Lock Response: Digit 1-8 on keypad light up.
3. Enter "7" to enter Bluetooth settings.
4. Enter "1" to enable Bluetooth, Bluetooth will work continuously after operation.
5. Enter "2" to disable Bluetooth, Bluetooth will shut down in 2mins after touch keypad lights off for energy saving, it will back to work when touch keypad wakes up.

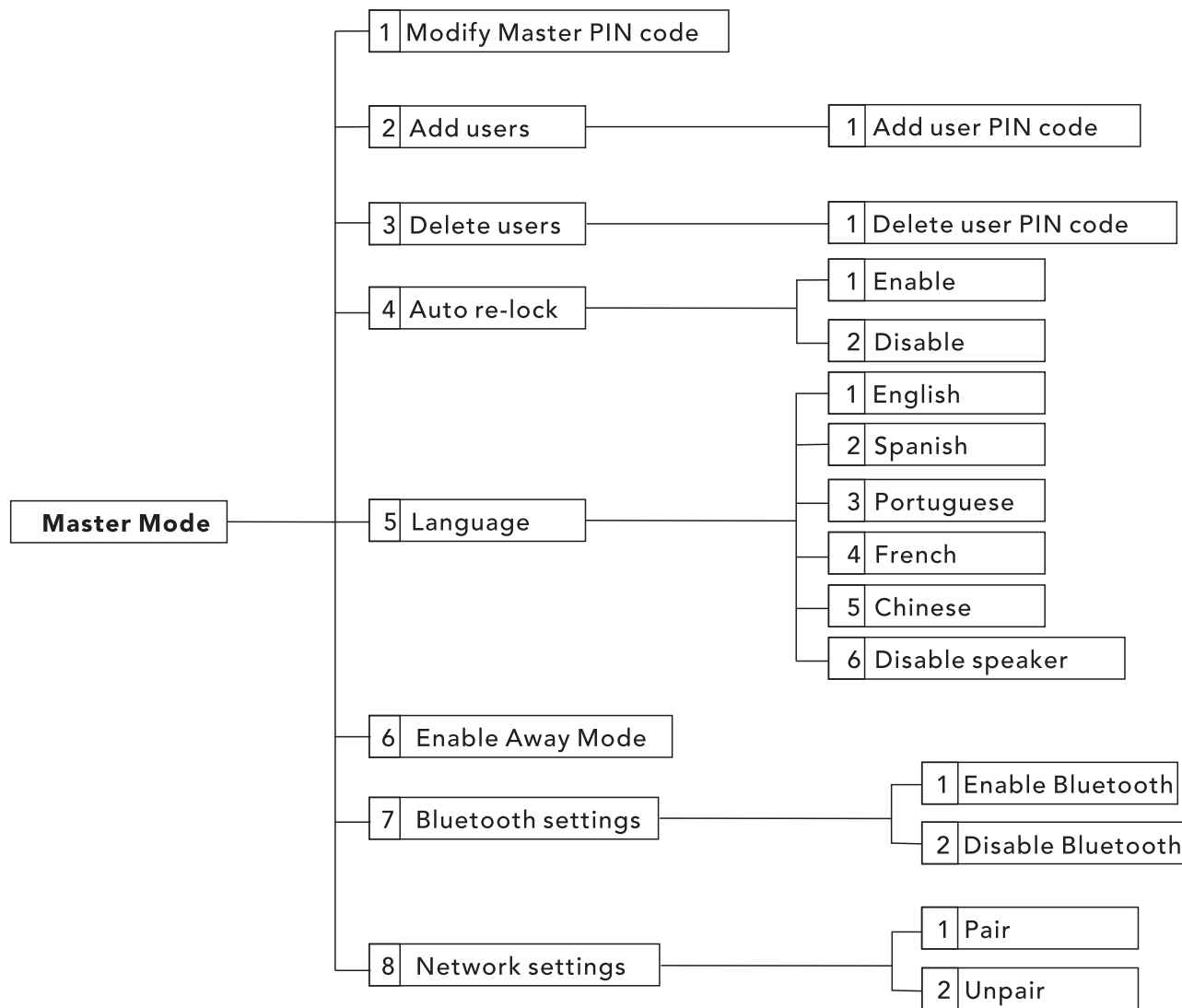
-Function extension settings (optional)

Network features are included in function extension, can only be programmed through the Master PIN Code. Refer to Network setting introduction.

CAUTION

If the lock is connected to a network controller, it is recommended that it is programmed through the centralized user interface(PC or hand-held device) to ensure communication between the lock and the controller.

Feature Programming Through Menu Mode using Master PIN Code



How to use

Unlock the door

1. Unlock the door from outside

- Use PIN code key



2. Unlock the door from inside

- Manual thumb turn



Turn the thumb turn on inside body

Lock the door

1. Lock the door from outside

Auto Re-lock Mode

In Auto re-lock mode, the bolt will be thrown out automatically in 30 seconds after unlock.

Manual Mode



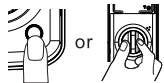
Press and hold any key on keypad for 2 seconds.

2. Lock the door from inside

Auto Re-lock Mode

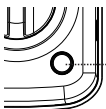
In Auto re-lock mode, the device is locked automatically.

Manual Mode



In Manual Mode, the device could be locked by pushing Multi-functional button or turning the thumb turn on inside body..

Enable Privacy Mode

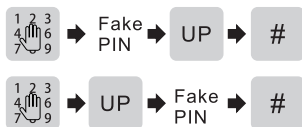


3
Sec.

As locking the door, push Multi-functional button on inside body for 3 seconds, the lock will be set to Privacy mode, it restricts all user PIN code access, except Master PIN code and APP. This feature will be disabled automatically after entering Master PIN Code or using APP access from outside, or someone unlock the unit by using thumb turn or override key (optional).

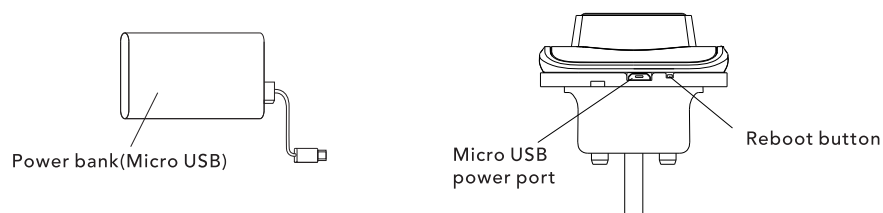
How to use

Unlock with Fake PIN code



User can prevent PIN code exposure from strangers by entering random digits before or after PIN code.

Micro USB emergency power supply and Reboot button



- Door lock can be connected to micro USB power bank when battery wears out.
- Door lock can be restarted by pressing Reboot button when crash down.

Reset to factory default settings

Operations on lock

1. Open the door and keep the lock in "unlock" status
2. Open battery box and find the reset button.
3. Use a sharp thing to press and hold the reset button.
4. Keep holding the reset button and remove a battery from battery box then replace it.
5. Keep holding the reset button until hearing voice guide.

Function extension instruction(Z-wave,remote control, etc)

1. Follow the user guide of your hub to enter learning mode.
2. Operate on lock following guide below
 - 2.1. Touch the screen with your hand to activate.
 - 2.2. Enter "*" twice and the Master PIN Code followed by "#". Lock Response: Digit 1-8 on keypad light up.
 - 2.3. Enter "8" to set up function extension.
 - 2.4. Enter "1" to pair, or, enter "2" to unpair.



When joining a network your controller may or may not be aware of any previously saved user codes stored in the lock. It is recommended that all user codes be deleted from the lock prior to joining a network.